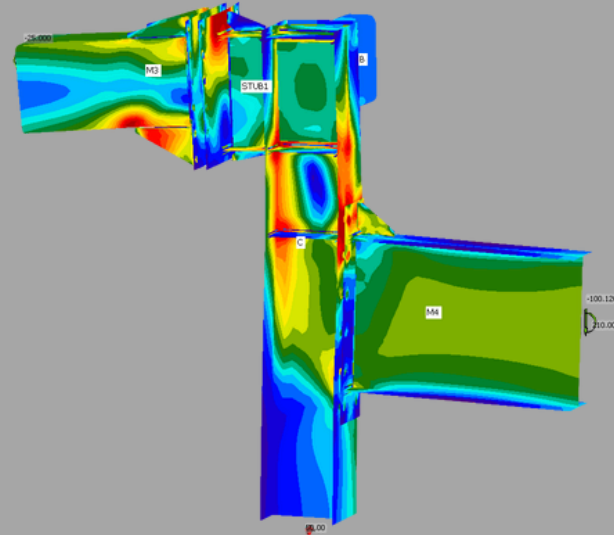


STRUCTURAL ENGINEER

Perform specialty structural design for connections, stairways, and miscellaneous structures



ABOUT HME

For nearly 30 years, HME has provided quality structural steel to projects across America. We continue to champion innovation, invest in cutting-edge technology, and expand our capabilities and team. We offer a range of careers in our shops, offices, and on our jobsites. We are looking for skilled individuals who take pride in their work, have a strong work ethic, and are driven to succeed.

OFFICES IN TOPEKA | KANSAS CITY | MANHATTAN | DALLAS | DENVER

STRUCTURAL ENGINEER

- Utilize advanced design software to analyze and design structural member connections
- Use FEA modeling software to design stairs and other misc. structures to meet required load and serviceability requirements
- Construct calculation packages to be submitted to EORs (Engineer of Record) that clearly communicate design parameters and results
- Work with a team of detailers who will build fabrication models and drawings that will be used to fabricate steel members and parts that will be assembled in the field
- Analyze, design, and select appropriate steel member connections for projects
- Submit requests for information (RFIs) to customers
- Provide final checks of drawings to ensure compliance with contract documents

DESIRED DEGREES + EXPERIENCE

- Preferred degree in Architectural Engineering or Civil Engineering (Structural Emphasis)
- Experience with AISC, IBC, OSHA codes preferred
- Experience in RISA 3D, Excel, MathCAD/TEDDS software preferred
- General knowledge of structural steel and miscellaneous metals

SKILLS NEEDED

- Ability to read and interpret drawings and contract specifications
- Manage multiple projects at once
- Analytical and problem-solving skills
- Strong leadership, organizational, and planning skills

UNMATCHED BENEFITS

**100% PAID HEALTH INSURANCE FOR YOU & FAMILY
OR RECEIVE \$2/HR. HEALTH INSURANCE DIFFERENTIAL**

- No Layoffs in Company History
- Competitive & Weekly Pay
- Company Bonuses
- Family-Focused Culture
- Flexible Schedules
- 401(k) Plan + Company Match
- Exclusive Investment Opportunities
- Paid Time Off & Paid Holidays

**START YOUR
KICK HAAS
CAREER**



HMEINC.NET/CAREERS

HME Group is an Equal Opportunity Employer

